

ATTACHING BATTERY PACK

ATTACHING BATTERY PACK

1. Slide Battery Pack Wire Clip **SECURELY** over boot top or attach to strap such as Velcro® Power Strap on ski or snowboard boot.
2. **NOTE: DO NOT SLIDE BATTERY PACK OVER SLIPPERY MATERIAL SUCH AS SKI BOOT PLASTIC AS THE EASIER IT SLIDES ON, THE EASIER IT WILL SLIDE OFF. SECURELY ATTACH BATTERY PACK AT ALL TIMES.**
3. **Mounting Bracket Accessory** (optional). Simple, non-electrical, non-mechanical, low profile bracket securely attaches Battery Pack to hard shell ski or snowboard boot.
4. **Velcro® Attachment Strap Accessory** (optional). Strap around leg at or above calf or around boot top. Battery Pack clips over Strap.
5. **Extension Cord Accessory** (optional). Run Cord underneath pant leg and plug into Battery Pack at waist height (80 cm Cord) or chest height (120 cm Cord).

POSITIONING BATTERY PACK

1. Positioning Battery Pack **HIGH on back** of boot permits pant leg to cover Battery Pack but increases potential **chair lift damage**.
2. Positioning Battery Pack **LOW on back** of boot reduces potential chair lift damage but increases potential **damage while walking down stairs**.
3. Positioning Battery Pack on **TOP FRONT** of boot permits pant leg to cover Battery Pack, eliminates potential chair lift and stair damage, and is convenient when adjusting Setting.

MOUNTING BRACKET INSTALLATION

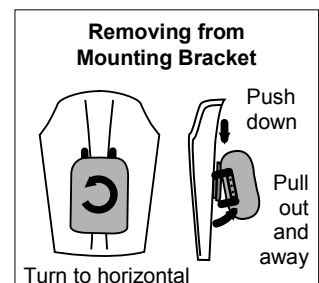
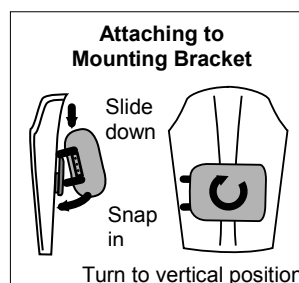
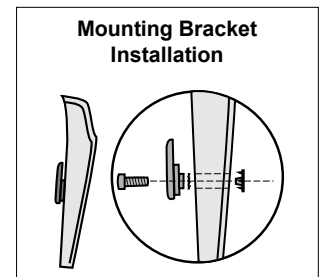
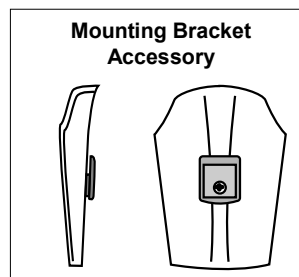
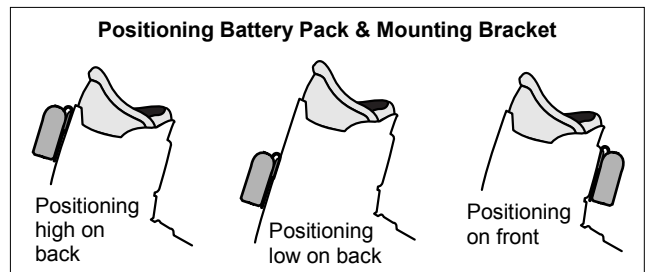
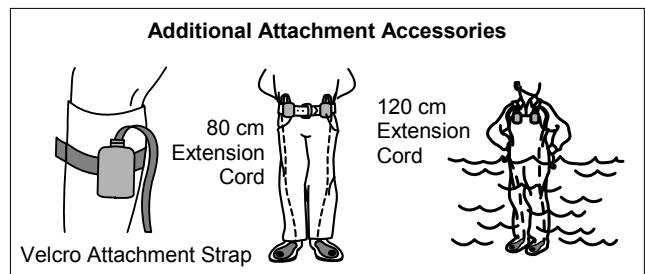
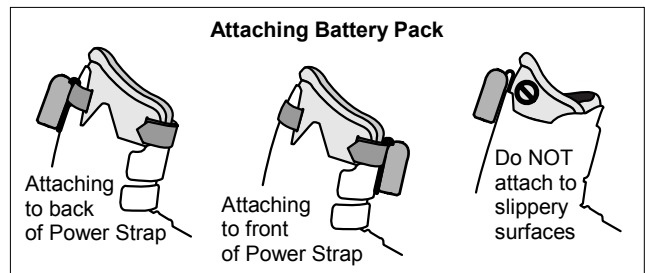
1. Determine best location on front or back of boot.
2. Note any internal molded ribs or mechanisms.
3. Drill a 5/16 inch (8mm) hole.
4. Insert Bracket Stem with Serrated Washer and Bolt.
5. Insert T-nut into Stem from inside boot.
6. Tighten Bracket, Serrated Washer, and T-nut until flush and secure against boot material such that it is difficult to see Serrated Washer.
7. If boot material is exceptionally hard, then heat with air gun until warm to touch to facilitate a flush fit against boot.
8. Use proper length bolt. If otherwise, trim, snip, or cut bolt to proper length.
9. If Bracket Stem is longer than hole depth, then gradually shorten Stem with razor knife for secure, flush fit against boot.

ATTACHING BATTERY PACK TO MOUNTING BRACKET

1. Position Battery Pack horizontally so Battery Clip upper wire "belt loop" section slides over top edge of Bracket.
2. Slide Battery Pack down on Bracket firmly until lower wire section of Battery Clip snaps over bottom edge of Bracket.
3. Turn Battery Pack 90° into vertical position.
4. Plug in Power Cord as final step.

REMOVING BATTERY PACK FROM MOUNTING BRACKET

1. First unplug Power Cord.
2. Turn Battery Pack 90° into horizontal position.
3. Push down on Battery Pack and simultaneously pull lower wire "belt loop" section of Clip out and away from boot until it releases from lower edge of Bracket.
4. Slide Battery Pack up and off Bracket.



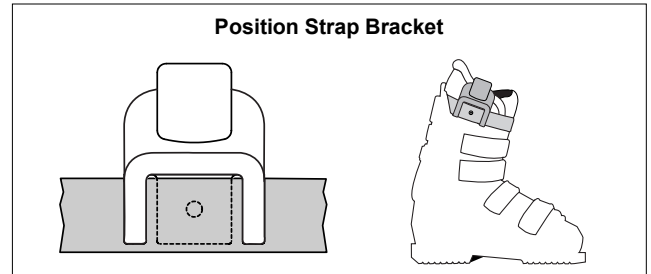
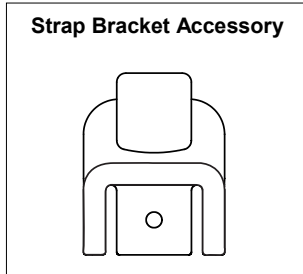
ATTACHING BATTERY PACK

NEW FOR 01/02...

HOTRONIC'S STRAP BRACKET ACCESSORY!

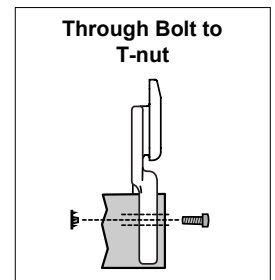
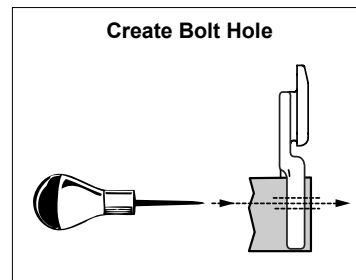
STRAP BRACKET ACCESSORY

1. Simple, non-electrical, non-mechanical, low profile bracket securely attaches to Power Strap. Battery Pack then attaches to Strap Bracket. Positions Battery Pack laterally at boot top above and out-of-the-way of the top buckle.



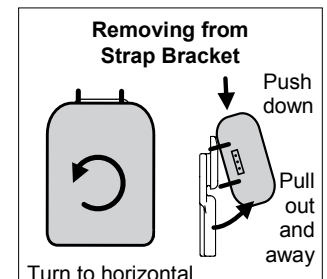
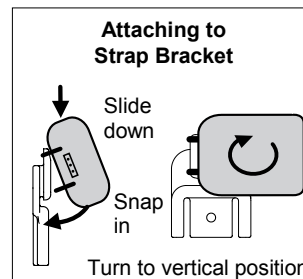
STRAP BRACKET INSTALLATION

1. Determine best location on Power Strap.
 - Too far forward obstructs closure of Power Strap.
 - Too far back conflicts with top back spoiler of boot.
2. Create bolt hole through Power Strap with sharp pointed tool such as an awl.
3. Through bolt to T-nut.



ATTACHING BATTERY PACK TO STRAP BRACKET

1. Position Battery Pack horizontally so Battery Clip upper wire "belt loop" section slides over top edge of Bracket.
2. Slide Battery Pack down on Bracket firmly until lower wire section of Battery Clip snaps over bottom edge of Bracket.
3. Turn Battery Pack 90° into vertical position.
4. Plug in Power Cord as final step.



REMOVING BATTERY PACK FROM STRAP BRACKET

1. First unplug Power Cord.
2. Turn Battery Pack 90° into horizontal position.
3. Push down on Battery Pack and simultaneously pull lower wire "belt loop" section of Clip out and away from boot until it releases from lower edge of Bracket.
4. Slide Battery Pack up and off Bracket.